

Data sheet

Commercial Art.No.: 94.623.1231.2

Cable assembly ST16/2BS K1 BS25 120WS

Extension cable 2x2,5mm², length 1,2m, ST16, 48V/25A, color: white



Commercial Art.No.	94.623.1231.2
EAN	4015573357471
Order Unit	1

Certificates / Approvals



Technical data

General

Rated current	25 A
Rated voltage	48 V
Rated impulse voltage	0.8 kV
Pollution degree	2
Mechanical coding	yes
Lockable	self-locking (unlocking by tool)
Color of coding/ contact carrier	white

Model

Nominal cross section conductor	2.5 mm ²
Degree of protection (IP)	IP20
Cable type	H07G
Cable color	white
Cable diameter max.	4 mm
Version of cable	Other
Type of cord set	connecting cable
Version cable end 1	female
Version cable end 2	male

Material

Surface finish	Silver-plated
halogen free	yes
Continuous temperature of cable	120 °C
Insulation components continuous temperature	100 °C
Fire load	0.131 kWh

Dimensions

Total length	1.2 m
--------------	-------

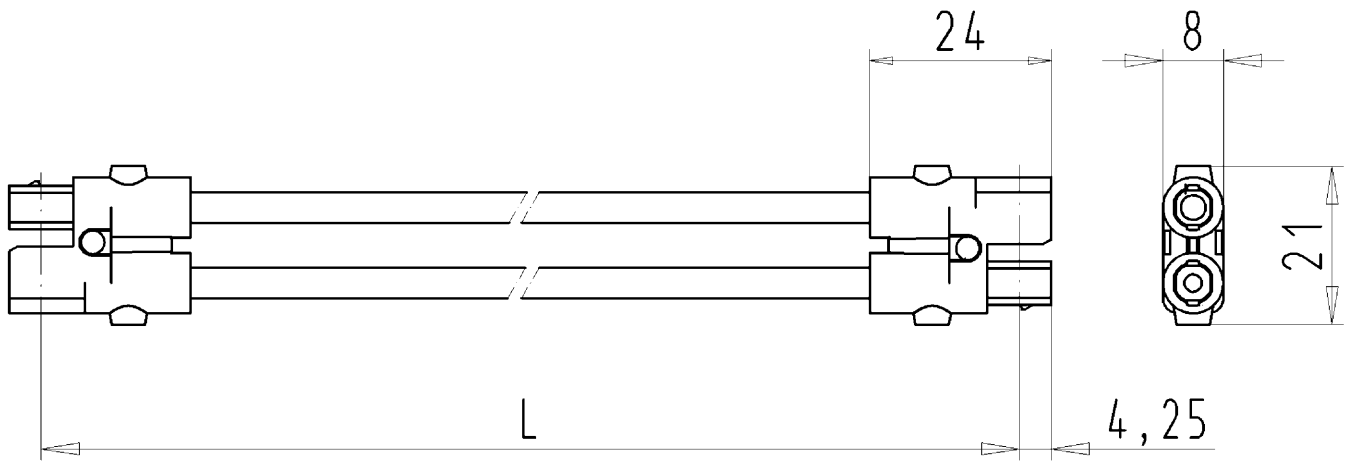
Classification

ECLASS 11	
ECLASS 8.1	27440604

ETIM 7.0	EC002587
ETIM 6.0	EC002587
ETIM 5.0	EC002587
ETIM 4.0	EC002587

Product compliance

ROHS conformity status	Compliant/Exempted
ROHS exceptions	III-6(c)
REACH-SVHC conformity status	Duty-To-Declare
REACH-SVHC substances	Lead
REACH-SVHC CAS numbers	7439-92-1



STECKVERBINDUNG ST16
 94.623.2431.2 10W
 06.10.2010 DÜT
 M 1:1

Weitergabe sowie Vervielfältigung dieses Dokuments, Verwertung und Mitteilung
 seines Inhalts sind verboten, soweit nicht ausdrücklich gestattet.
 The reproduction, distribution and utilization of this document as well as the
 communication of its contents to others without express authorization is prohibited.