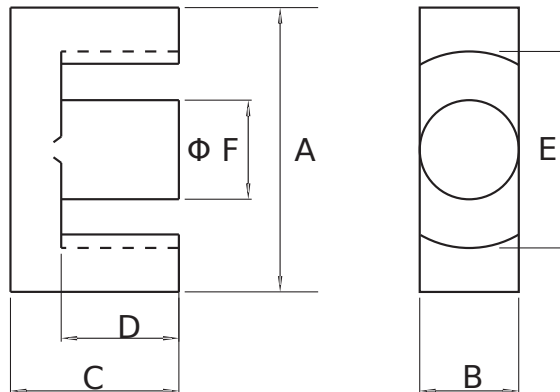


Dimension: (UNIT:mm)

A	35.0-1.6
B	11.1-0.6
C	17.5- 0.4
D	12.1± 0.3
E	25.6Min
F	11.1-0.6
G	
H	

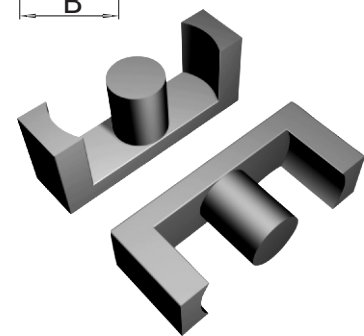


Test conditions

AL: F=1.0KHz U=0.3V N=10Ts

Effective parameter

C1(mm) ⁻¹	Ae(mm ²)	Le(mm)	Ve(mm ³)	Weight(g)
0.81	97.1	78.6	7640	≈20



Core halves.

Clamping force for AI measurements, 40+/-20N.
gapped cores are available on request.

Grade	AL (nH)	μ e	AIR GAP μ m	Type number
P3	2700 ± 25%	≈ 1740	≈ 0	ETD34 - P3

Properties of core sets under power conditions

Grade	B (mT)at	Core loss (w) at			
	H=250 A/m F=25KHz T=100 °C	F=25 KHz B=200mT T=100 °C	f=100 KHz B=100mT T=100 °C	F=100 KHz B=200 mT T=100 °C	F=400 KHz B=50mT T=100 °C
P3	≥ 330	≤ 0.92	≤ 0.97	-	-