
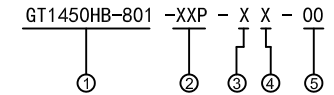


REV	CONTENT	CHK	DATE
V0.0	CONTENT	CXL	20.05.11

**Electrical :**

- |   |   |                        |
|---|---|------------------------|
|   | UL  | IEC                    |
| 1.Rated Voltage :                       | 300V  | 250V                   |
| 2.Rated Current :                       | 6.3A  | 6.3A                   |
| 3.Torque Value :                        | M3,4.43Lb.in  | M3, 0.5N.m             |
| 4.Wire Range:                           | 22-14AWG  | 0.5-2.5mm <sup>2</sup> |
| 5.Stripping Length :                    | 6-7mm   |                        |
| 6.Withstanding Voltage :                | AC2000V/1Min.   |                        |
| 7.Operating Temperature :               | -40°C~+105°C  |                        |
| 8.RoHS Compliance                       |   |                        |
| 9.Safty Approval :                      |  |                        |
| 10."★" is the key quality control point |   |                        |



- ① Series NO.    ③ 1 Single Pitch  
                          2 Double Pitch

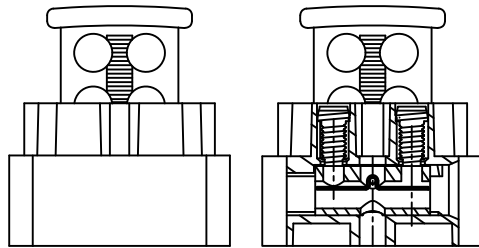
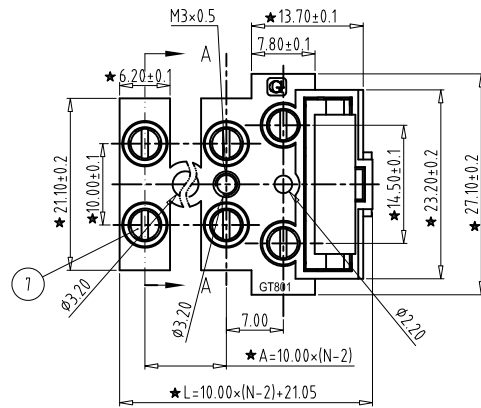
- ② Poles                    ④ Color: 1 Grey  
          02 02Contacts        2 Blue  
          03 03Contacts        3 Black  
          ...                    4 Green  
          05 05Contacts        5 Orange  
                                  6 Red  
                                  7 Transparent  
                                  8 Yellow  
                                  9 White

⑤ Customer Request: 00--Zinc Alloy Cage

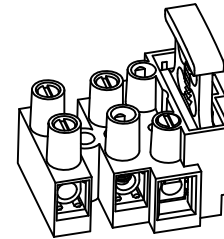
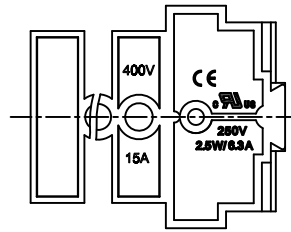
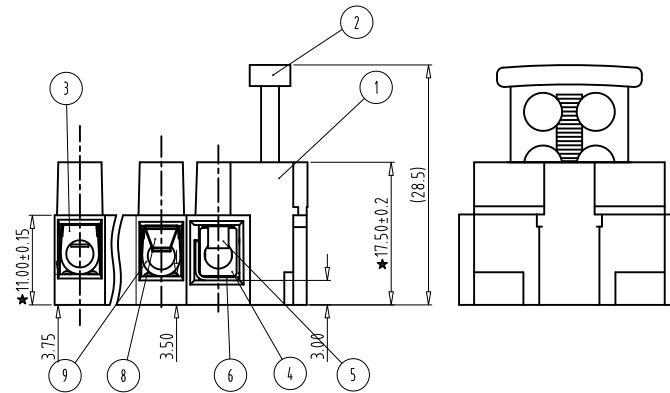
9	Brass Cage-02	XX	1	Brass	Ni Plated
8	Spring-02	XX	2	Stainless Steel	/
7	SCREW	XX	2P	Steel	Zn Plated
6	Clamp	XX	2	Phosphor Bronze	Ni Plated
5	Spring	XX	2	Stainless Steel	/
4	Brass Cage	XX	2	Brass	Ni Plated
3	Current carrier	XX	P-2	Zinc Alloy	Ni Plated
2	HAND	XX	1	PA66 UL94V-0	SEE NOTE
1	HOUSING	XX	1	PA66 UL94V-0	SEE NOTE

ITEM	NAME OF PART	NO. OF PART	Q'TY	MATERIAL	NOTE
DWG.	CXL	DATE	20.05.11	SIZE	A4 UNITS mm SHEET/OF 1/1
CHK.		DATE		SCALE	1:1
APP.		DATE		NAME	GT1450HB-801-XXP-XX-00
				DWGNO.	XXXX

**Grolten** 宁波冠泰电子有限公司  
NINGBO GOLTEN ELECTRONICS CO., LTD.



SECTION A-A



Total Pitch Tolerances in mm										Nominal dimension range in mm										⊥	≡	—	//		
over 0	over 30	over 53	over 70	over 90	over 115	over 150	over 250	over 350	over 500	over 0	over 30	over 53	over 70	over 90	over 115	over 150	over 200	over 250	over 320	0	over 10	all	0	over 100	over 150
±0.18	±0.20	±0.25	±0.3	±0.35	±0.4	±0.60	±0.70	±0.85	±0.20	±0.25	±0.30	±0.35	±0.4	±0.55	±0.70	±0.80	±0.90	0.2	0.3	0.3	0.2	0.3	0.5		