

Data sheet

Commercial Art.No.: 76.325.2528.0

Bottom HD GUT GP 25 50 A

Bottom-base revos HD made of aluminum, with single locking lever and protective cover, open, low version, 25-poles



Commercial Art.No.	76.325.2528.0
EAN	4015573230965
Order Unit	1

Technical data

Model

Construction	16/25
Locking mechanism	Single locking lever
Cable entry	None
Type of cable	None
With cable screw gland	No
Thread size PG	
Length	96 mm
Width	30.5 mm
Height	45 mm

General

Housing material	aluminum
Color	Grey
Surface	With powder coating
Degree of protection (IP)	IP57
UV resistant	yes
Inflammability class of insulation material acc. with UL94	Other
Operating temperature range min.	-40 °C
Operating temperature range max.	120 °C

Classification

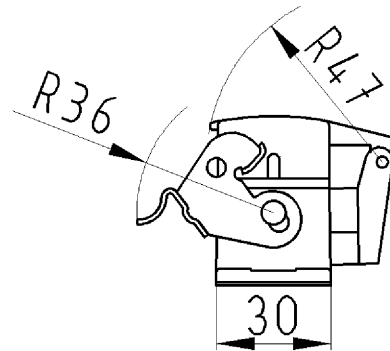
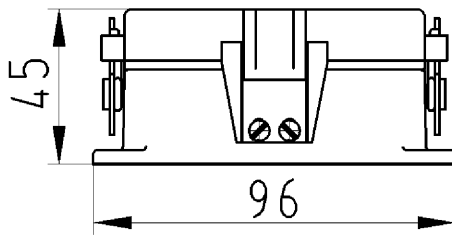
ECLASS 11	
ECLASS 8.1	27440202
ETIM 7.0	EC000437

Product compliance

ROHS conformity status	Compliant/Exempted
ROHS exceptions	III-6(a); III-6(b)
REACH-SVHC conformity status	Duty-To-Declare
REACH-SVHC substances	Lead
REACH-SVHC CAS numbers	7439-92-1

Fits with

Commercial Art.No.:	Article-type description:	Description:
73.300.1653.0	Female insert HD BUS 16 2,5 25 AG	revos BASIC HD 16 pole + ground, female insert 250V/16A, screw connection
73.300.1653.3	Female insert HD BUS SB 16 2,5 25 AG	revos BASIC HD 16 pole + ground, female insert, marked 17-32, 250V/16A, screw connection
73.310.1653.0	Male insert HD STS 16 2,5 25 AG	revos BASIC HD 16 pole + ground, male insert 250V/16A, screw connection
73.310.1653.3	Male insert HD STS SB 16 2,5 25 AG	revos BASIC HD 16 pole + ground, male insert, marked 17-32, 250V/16A, screw connection
73.700.2553.0	Female insert HD BUC 25 25	revos HD 25 pole + ground, female insert 250V/10A, crimp connection
73.710.2553.0	Male insert HD STC 25 25	revos HD 25 pole + ground, male insert 250V/10A, crimp connection



Gehäuseunterteil
76.325.2528.0

Zeichnungsnummer
76.325.2528.010W
Gehäuseunterteil

09.01.2008
Hoffmann Angelika
M 1:2