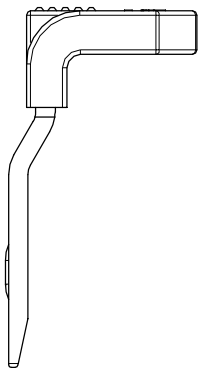
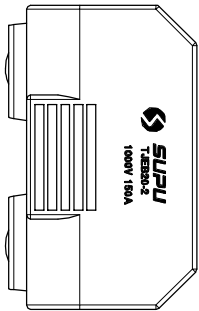
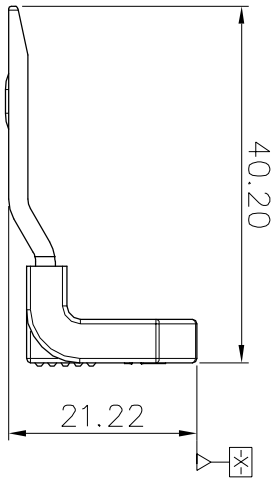
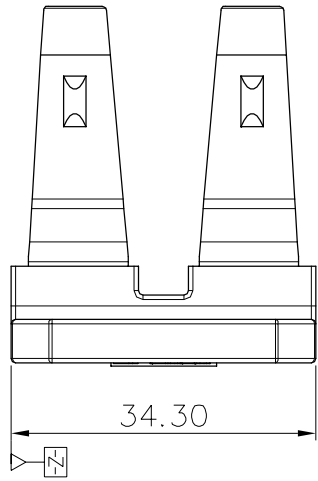


Transmittal, reproduction, dissemination and/or editing of this document as well as utilization of its contents and communication thereof to others without express authorization are prohibited.

未经允许禁止传输、复制、编辑该文档，以及利用其内容进行交流

REVISION RECORD			
REV	ECN	DESCRIPTION	DATE



HOW TO ORDER:

TJEB20-2

Series No.

原图号
Old Draw. No.

借通用件登记
Common Part

Rated current(A)	150	1 boundary bridge
Rated current(A)	130	2-4 boundary bridges

Material:

Insulator	PA66	UL94 V-0
Conductor	Copper alloy	Sn plated

- General information:
 1. Dimension shall be interpreted per ASME Y14.5-2009
 2. Operating temperature: -40°C~+105°C
 3. RoHS Compliance
 4. Undimensioned Tolerances:

Pitch Range	mm	In mm	Over	Over	Over	Over	Over	Over	Over	Over
±0.15	±0.20	±0.30	±0.30	±0.50	±0.70	±1.00	±1.30	±2.0	±2.0	±2.0

订货号 Order No.	TJEB20-2	名称 Name	TJEB20-2跨接桥	未注公差 Tolerance	表面 Surface
项目 Item	签字 Signature	图号 Drawing No.	/	版本号 Revision Number	VDI21
设计 Design	cjs	材料 Material	Notes	重量 Weight	比例 Scale
审核 Check	df	物料号 Item No.	411014987	第1页/共1页 1 of 1	1:1
工艺 Process	-	批准 Approve	1w1	NINGBO SUZU ELECTRONICS CO.,LTD.	
标准化 Unity	-	日期 Date	04/07/21	SUZU 宁波苏普电子有限公司	
批准 Approve	1w1	日期 Date	04/07/21	NINGBO SUZU ELECTRONICS CO.,LTD.	